



0-1000  
ppb

# Phosphate Test Kit

## Low Range

30 Tests - easy and accurate

### Contents

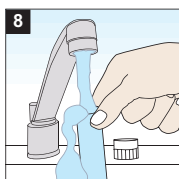
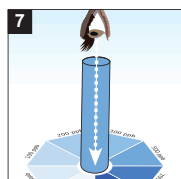
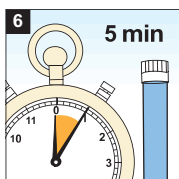
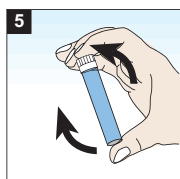
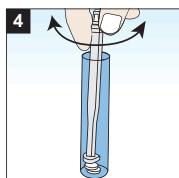
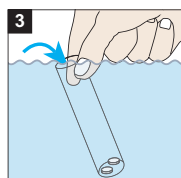
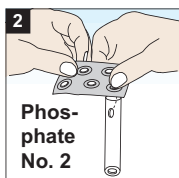
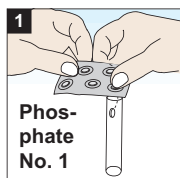
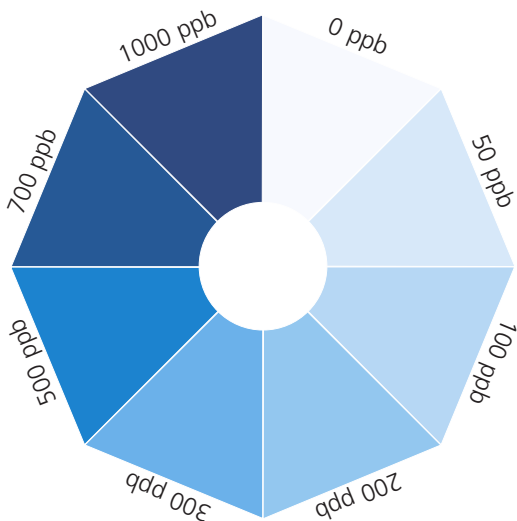
- 1 Colour card
- 1 Stirring rod, length 13 cm
- 1 Test vial & stopper
- 30 Phosphate No.1 tablets
- 30 Phosphate No.2 tablets
- 1 Instruction Manual

Giftnotruf Berlin, Germany  
Poison Center Berlin, Germany  
Tel.: (+49) (0)30 / 30 686 790

Technical changes without notice  
Printed in Germany, 07/17

No.: 00 38 55 01

1000 ppb = 1 mg/l PO<sub>4</sub>



- 1 + 2** Add tablet reagents to empty vial.
- 3** Fill vial completely with sample.
- 4** Crush tablets by twisting the stirring rod. Spill over of a bit sample while immersing the rod is normal and leads to a defined volume in the vial.
- 5** Sway vial until tablets are completely dissolved.
- 6 + 7** After 5 minutes compare colour with colour card and get result.
- 8** Rinse vial and stopper with drinking water.