

Lovibond® Water Testing

Tintometer® Group



Manual of Methods

MD50 • MD150

EN MD50 Photometer

Page 4

ES Fotómetro MD50

Página 8

PT Fotómetro MD50

Página 12

NL MD50 Fotometer

Zijde 16

RU Фотометр MD50

Страница 20

DE MD50 Photometer

Seite 6

FR MD50 Photomètre

Page 10

IT Fotometro MD50

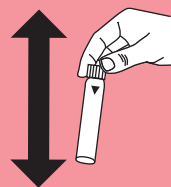
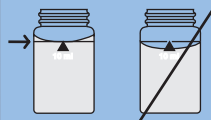
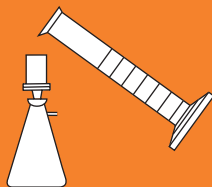
Pagina 14

TR MD50 fotometre

Sayfa 18

ZH MD50 光度计

Page 22



KS4.3 T / 20


Method name

Method number

Bar code for the detection of the methods

Measuring range

20

S:4.3

Chemical Method

Display in the MD 100 / MD 110 / MD 200

Instrument specific information

The test can be performed on the following devices. In addition, the required cuvette and the absorption range of the photometer are indicated.

Instrument Type	Cuvette	λ	Measuring Range
MD 200, MD 600, MD 610, MD 640, MultiDirect, PM 620, PM 630	ø 24 mm	610 nm	0.1 - 4 mmol/l $K_{S4.3}$
SpectroDirect, XD 7000, XD 7500	ø 24 mm	615 nm	0.1 - 4 mmol/l $K_{S4.3}$

Material

Required material (partly optional):

Reagents	Packaging Unit	Part Number
Alka-M-Photometer	Tablet / 100	513210BT
Alka-M-Photometer	Tablet / 250	513211BT

Application List

- Waste Water Treatment
- Drinking Water Treatment
- Raw Water Treatment

Notes

1. The terms Alkalinity-m, m-Value, total alkalinity and Acid demand to $K_{S4.3}$ are identical.
2. For accurate results, exactly 10 ml of water sample must be used for the test.

Language codes ISO 639-1

Revision status

EN Handbook of Methods 01/20

Performing test procedure

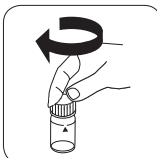
Implementation of the provision Acid capacity $K_{S4.3}$ with Tablet

Select the method on the device

For this method, no ZERO measurements are to be carried out with the following devices: XD 7000, XD 7500



Fill 24 mm vial with **10 ml sample**.



Close vial(s).

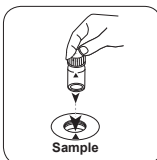


Place **sample vial** in the sample chamber. • Pay attention to the positioning.

• • •



Dissolve tablet(s) by inverting.




Place **sample vial** in the sample chamber. • Pay attention to the positioning.



Press the **TEST (XD: START)** button.

The result in Acid Capacity $K_{S4.3}$ appears on the display.

KS4.3 T / 20


Methoden Name

Methodennummer

Barcode zur Methodenerkennung

Messbereich

$K_{S_{4.3} T}$
 0,1 - 4 mmol/l $K_{S_{4.3}}$
 Säure / Indikator

20

S:4.3

Displayanzeige im MD 100 MD 110 / MD 200

Chemische Methode

Instrumentenspezifische Informationen

Der Test kann auf den folgenden Geräten durchgeführt werden. Zusätzlich sind die benötigte Küvette und der Absorptionsbereich der Photometer angegeben.

Geräte	Küvette	λ	Messbereich
MD 200, MD 600, MD 610, MD 640, MultiDirect, PM 620, PM 630	ø 24 mm	610 nm	0,1 - 4 mmol/l $K_{S_{4.3}}$
SpectroDirect, XD 7000, XD 7500	ø 24 mm	615 nm	0,1 - 4 mmol/l $K_{S_{4.3}}$

Material

Benötigtes Material (zum Teil optional):

Reagenzien	Form/Menge	Bestell-Nr.
Alka-M-Photometer	Tablette / 100	513210BT
Alka-M-Photometer	Tablette / 250	513211BT

Anwendungsbereich

- Abwasserbehandlung
- Trinkwasseraufbereitung
- Rohwasserbehandlung

Anmerkungen

1. Die Begriffe Alkalität-m, m-Wert, Gesamtalkalität und Säurekapazität $K_{S_{4.3}}$ sind identisch.
2. Die exakte Einhaltung des Probevolumens von 10 ml ist für die Genauigkeit des Analyseergebnisses entscheidend.

Sprachkürzel nach ISO 639-1

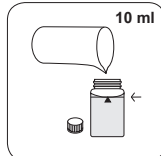
Revisionsstand

DE Methodenhandbuch 01/20

Durchführung der
Messung**Durchführung der Bestimmung Säurekapazität $K_{s4,3}$ mit Tablette**

Die Methode im Gerät auswählen.

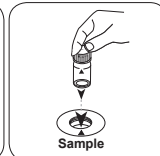
Für diese Methode muss bei folgenden Geräten keine ZERO-Messung durchgeführt werden: XD 7000, XD 7500



24-mm-Küvette mit **10 ml Probe** füllen.

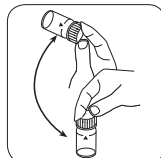


Küvette(n) verschließen.

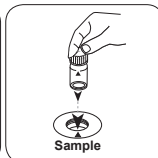


Die **Probeküvette** in den Messschacht stellen. Positionierung beachten.

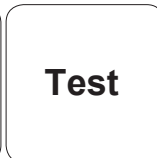
• • •



Tablette(n) durch Umschwenken lösen.



Die **Probeküvette** in den Messschacht stellen. Positionierung beachten.



Taste **TEST** (XD: **START**) drücken.

In der Anzeige erscheint das Ergebnis als Säurekapazität $K_{s4,3}$.

KS4.3 T / 20

Nombre del método

Número de método

Código de barras para reconocer el método

Rango de medición

20

S:4.3

Indicación en la pantalla de MD 100 / MD 110 / MD 200

Método químico

Información específica del instrumento

La prueba puede realizarse en los siguientes dispositivos. Además, se muestran la cubeta requerida y el rango de absorción del fotómetro.

Dispositivos	Cubeta	λ	Rango de medición
MD 200, MD 600, MD 610, MD 640, MultiDirect, PM 620, PM 630	\varnothing 24 mm	610 nm	0.1 - 4 mmol/l $K_{S4.3}$
SpectroDirect, XD 7000, XD 7500	\varnothing 24 mm	615 nm	0.1 - 4 mmol/l $K_{S4.3}$

Material

Material requerido (parcialmente opcional):

Título	Unidad de embalaje	Referencia No
Fotómetro alca-M	Tabletas / 100	513210BT
Fotómetro alca-M	Tabletas / 250	513211BT

Lista de aplicaciones

- Tratamiento de aguas residuales
- Tratamiento de aguas potables
- Tratamiento de aguas de aporte

Notas

1. Las definiciones de alcalinidad-m, valor-m y capacidad ácida $K_{S4.3}$ son idénticas.
2. Añadir un volumen de muestra de exactamente 10 ml, ya que este volumen influye de forma decisiva en la exactitud del resultado.

Códigos de idioma ISO 639-1

Estado de revisión

ES Manual de Métodos 01/20

Realización de la determinación

Ejecución de la determinación Capacidad ácida $K_{s4.3}$ con tableta

Seleccionar el método en el aparato.

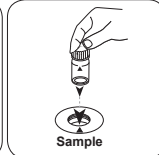
Para este método no es necesario realizar medición CERO en los aparatos siguientes: XD 7000, XD 7500



Llenar la cubeta de 24 mm con 10 ml de muestra .

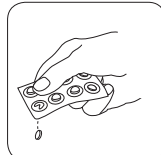


Cerrar la(s) cubeta(s).

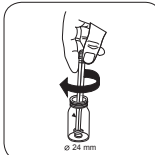


Poner la **cubeta de muestra** en el compartimiento de medición. ¡Debe tenerse en cuenta el posicionamiento!

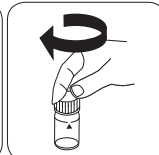
• • •



Añadir **tableta ALKA-M-PHOTOMETER**.




Triturar la(s) tableta(s) girando ligeramente.



Cerrar la(s) cubeta(s).

KS4.3 T / 20



Nom de la méthode → KS4.3 T

Numéro de méthode → 20

Code à barres pour reconnaître la méthode → [Barcode]

Plage de mesure → 0.1 - 4 mmol/l $K_{S4.3}$

Méthode chimique → Acide / Indicateur

Affichage dans le MD 100 / MD 110 / MD 200 → S:4.3

Informations spécifiques à l'instrument

Le test peut être effectué sur les appareils suivants. De plus, la cuvette requise et la plage d'absorption du photomètre sont indiquées.

Appareils	Cuvette	λ	Gamme de mesure
MD 200, MD 600, MD 610, MD 640, MultiDirect, PM 620, PM 630	ø 24 mm	610 nm	0.1 - 4 mmol/l $K_{S4.3}$
SpectroDirect, XD 7000, XD 7500	ø 24 mm	615 nm	0.1 - 4 mmol/l $K_{S4.3}$

Matériel

Matériel requis (partiellement optionnel):

Titre	Pack contenant	Code
Alka-M-Photometer	Pastilles / 100	513210BT
Alka-M-Photometer	Pastilles / 250	513211BT

Liste d'applications

- Traitement des eaux usées
- Traitement de l'eau potable
- Traitement de l'eau brute

Indication

1. Les termes Alcalinité-m, Valeur m, Alcalinité totale et Capacité acide $K_{S4.3}$ sont identiques.
2. L'observation exacte du volume d'échantillon de 10 ml est décisive pour l'exactitude du résultat de l'analyse.

Codes de langue ISO 639-1 → FR

État de révision → 01/20

FR Méthodes Manuel 01/20

Procédure du test

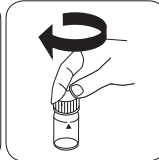
Réalisation de la quantification Capacité acide $K_{s4.3}$ avec pastille

Sélectionnez la méthode sur l'appareil.

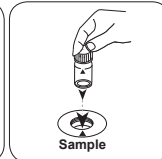
Cette méthode ne nécessite aucune mesure du zéro sur les appareils suivants : XD 7000, XD 7500



Remplissez une cuvette de 24 mm de **10 ml d'échantillon**.

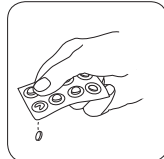


Fermez la(les) cuvette(s).

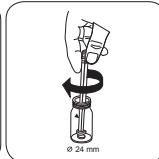


Placez la **cuvette réservée à l'échantillon** dans la chambre de mesure. Attention à la positionner correctement.

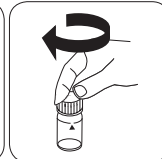
• • •



Ajoutez une **pastille de ALKA-M-PHOTOMETER**.




Écrasez la(les) pastille(s) en la(les) tournant un peu.



Fermez la(les) cuvette(s).

KS4.3 T / 20



Nome do método

Número do método

Código de barras para a detecção dos métodos

Área de medição

$K_{S_{4.3} T}$
 0.1 - 4 mmol/l $K_{S_{4.3}}$
 Ácido / Indicador

20
 S:4.3

Indicador no display: MD 100 / MD 110 / MD 200

Método Químico

Informação específica do instrumento

O teste pode ser realizado nos seguintes dispositivos. Além disso, a cubeta necessária e a faixa de absorção do fotómetro são indicadas.

Dispositivos	Cubeta	λ	Faixa de Medição
MD 200, MD 600, MD 610, MD 640, MultiDirect, PM 620, PM 630	ø 24 mm	610 nm	0.1 - 4 mmol/l $K_{S_{4.3}}$
SpectroDirect, XD 7000, XD 7500	ø 24 mm	615 nm	0.1 - 4 mmol/l $K_{S_{4.3}}$

Material

Material necessário (parcialmente opcional):

Título	Unidade de Embalagem	Artigo No
Alka-M-Photometer	Pastilhas / 100	513210BT
Alka-M-Photometer	Pastilhas / 250	513211BT

Lista de Aplicações

- Tratamento de Esgotos
- Tratamento de Água Potável
- Tratamento de Água Bruta

Notas

1. Os termos alcalinidade-m, m-valor, alcalinidade total e capacidade de acidez $K_{S_{4.3}}$ são idênticos.
2. O cumprimento exato do volume da amostra de 10 ml é decisivo para a precisão do resultado de análise.

Códigos de idioma ISO 639-1

Nível de revisão

PT Métodos Manual 01/20

Efetuar a medição

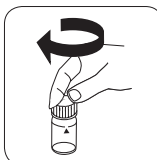
Realização da determinação Capacidade de acidez $K_{s4.3}$ com pastilha

Escolher o método no equipamento.

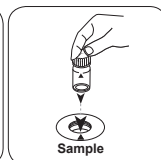
Para este método não tem de ser efetuada uma medição ZERO nos seguintes equipamentos: XD 7000, XD 7500



Encher a célula de 24 mm com 10 ml de amostra .

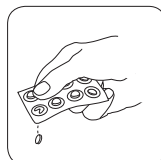


Fechar a(s) célula(s).

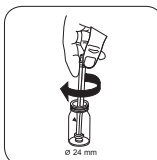


Colocar a **célula de amostra** no compartimento de medição. Observar o posicionamento.

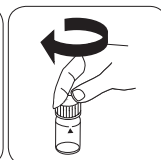
• • •



Pastilha ALKA-M-PHOTO-METER.



Esmagar a(s) pastilha(s) rodando ligeiramente.




Fechar a(s) célula(s).

PT Métodos Manual 01/20

PT

KS4.3 T / 20



Denominazione metodo

Numero metodo

Codice a barre per riconoscere il metodo

Range di misura

$K_{S_{4.3} T}$
0.1 - 4 mmol/l $K_{S_{4.3}}$

Acido/indicatore

20
S:4.3

Indicazione sul display del MD 100 / MD 110 / MD 200

Metodo chimico

Informazioni specifiche dello strumento

Il test può essere eseguito sui seguenti dispositivi. Inoltre, sono indicate la cuvetta richiesta e il range di assorbimento del fotometro.

Dispositivi	Cuvetta	λ	Campo di misura
MD 200, MD 600, MD 610, MD 640, MultiDirect, PM 620, PM 630	ø 24 mm	610 nm	0.1 - 4 mmol/l $K_{S_{4.3}}$
SpectroDirect, XD 7000, XD 7500	ø 24 mm	615 nm	0.1 - 4 mmol/l $K_{S_{4.3}}$

Materiale

Materiale richiesto (in parte facoltativo):

Titolo	Unità di imballaggio	N. ordine
Alka-M-Photometer	Pastiglia / 100	513210BT
Alka-M-Photometer	Pastiglia / 250	513211BT

Campo di applicazione

- Trattamento acqua di scarico
- Trattamento acqua potabile
- Trattamento acqua non depurata

Note

1. I termini alcalinità M, valore M, alcalinità totale e capacità acida $K_{S_{4.3}}$ sono equivalenti.
2. Per l'accuratezza del risultato dell'analisi è fondamentale che il volume del campione misuri esattamente 10 ml.

ISO 639-1 codici linguistici

Stato di revisione

IT Manuale dei Metodi 01/20

**Svolgimento della
misurazione**

Esecuzione della rilevazione Capacità acida $K_{s4,3}$ con pastiglia

Selezionare il metodo nel dispositivo.

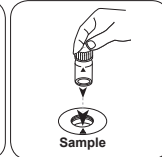
Con i seguenti dispositivi, per questo metodo non è necessario eseguire una misurazione ZERO: XD 7000, XD 7500



Riempire una cuvetta da 24 mm con **10 ml di campione**.

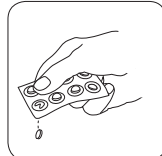


Chiudere la/e cuvetta/e.

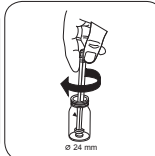


Posizionare la **cuvetta del campione** nel vano di misurazione. Fare attenzione al posizionamento.

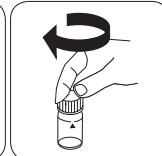
• • •



Aggiungere una **pastiglia ALKA-M-PHOTOMETER**.




Frantumare la/e pastiglia/e con una leggera rotazione.



Chiudere la/e cuvetta/e.

KS4.3 T / 20



Naam van de methode

Nummer methode

Streepjescode ter identificatie van de methode

Meetbereik

$K_{S_{4.3}} T$ M20
0.1 - 4 mmol/l $K_{S_{4.3}}$ S:4.3
Zuur / Indicator

Chemische methode

Uitlezing in MD
100 MD 110 / MD
200

Instrument specifieke informatie

De test kan op de volgende apparaten worden uitgevoerd. Bovendien worden de vereiste cuvette en het absorptiebereik van de fotometer aangegeven.

Toestellen	Cuvet	λ	Meetbereik
MD 200, MD 600, MD 610, MD 640, MultiDirect, PM 620, PM 630	\varnothing 24 mm	610 nm	0.1 - 4 mmol/l $K_{S_{4.3}}$
SpectroDirect, XD 7000, XD 7500	\varnothing 24 mm	615 nm	0.1 - 4 mmol/l $K_{S_{4.3}}$

Reagentia

Benodigd materiaal (deels optioneel):

Titel	Verpakkingseenheid	Bestelnr.
Alka-M-Photometer	Tablet / 100	513210BT
Alka-M-Photometer	Tablet / 250	513211BT

Toepassingsbereik

- Afvalwaterzuivering
- Behandeling drinkwater
- Zuivering vervuild water

Aantekeningen

1. De termen alkaliteit-m, m-waarde, totale alkaliteit en zuurcapaciteit_{S_{4.3}} zijn identiek.
2. De exacte naleving van het monstervolume van 10 ml is bepalend voor de nauwkeurigheid van het analysesresultaat.

Beknopte naam conform de norm ISO 639-1

Herziene versie

NL Handboek van Methoden 01/20

Uitvoering van de meting

Uitvoering van de bepaling Zuurcapaciteit $K_{s4,3}$ met tablet

De methode in het apparaat selecteren.

Voor deze methode moet bij de volgende apparaten geen nulmeting worden uitgevoerd:
XD 7000, XD 7500



Spoelbakje van 24 mm met **10 ml staal** vullen.

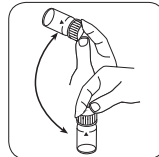


De spoelbakjes afsluiten.



Het **staalspoelbakje** in de meetschacht plaatsen. Op de positionering letten.

• • •



Tabletten oplossen door om te draaien



Het **staalspoelbakje** in de meetschacht plaatsen. Op de positionering letten.



De toets **TEST** (XD: **START**) indrukken.

De display toont het resultaat als Zuurcapaciteit $K_{s4,3}$.

KS4.3 T / 20

Yöntem Adı

Yöntemleri numarası

Yöntemi tanımak için barkod

Ölçüm aralığı

Kimyasal Metod

$K_{S4.3} T$
0.1 - 4 mmol/l $K_{S4.3}$
Asit / Gösterge

20
S:4.3

Ekrandaki: MD 100 MD 110 / MD 200

Enstrümana özel bilgi

Test, aşağıdaki cihazlarda gerçekleştirilebilir. Ek olarak, gerekli küvet ve fotometrenin emilim aralığı belirtilmiştir.

Cihazlar	Küvet	λ	Ölçüm Aralığı
MD 200, MD 600, MD 610, MD 640, MultiDirect, PM 620, PM 630	ø 24 mm	610 nm	0.1 - 4 mmol/l $K_{S4.3}$
SpectroDirect, XD 7000, XD 7500	ø 24 mm	615 nm	0.1 - 4 mmol/l $K_{S4.3}$

Malzeme

Gerekli materyal (kısmen isteğe bağlı):

Başlık	Paketleme Birimi	Ürün No
Alka-M-Photometer	Tablet / 100	513210BT
Alka-M-Photometer	Tablet / 250	513211BT

Uygulama Listesi

- Atık Su Arıtma
- İçme Suyu Arıtma
- Ham Su Arıtma

Notlar

1. Alkalite-m, m değeri, toplam alkalite ve asit kapasitesi $K_{S4.3}$ kavramları ayrıdır.
2. 10 ml'lik numune hacmine tam riayet edilmesi, analiz sonucunun doğruluğu bakımından önemlidir.

Dil kodları ISO 639-1

Revizyon durumu

TR Metotlar Kılavuzu 01/20

Testin uygulanması
Tespitin uygulanması Tabletli asit kapasitesi $K_{S4,3}$

Cihazda metot seçin.

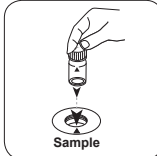
Bu metot için şu cihazlarda ZERO ölçümü yapılması gerekmez: XD 7000, XD 7500



24 mm'lik küveti **10 ml numune** ile doldurun.

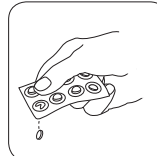


Küveti(küvetleri) kapatın.

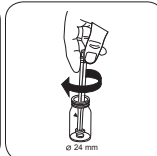


Numune küvetini ölçüm haznesine koyun. Doğru konumlandırılmasına dikkat edin.

• • •



ALKA-M-PHOTOMETER tablet ilave edin.




Tablet(i/tabletleri) hafifçe döndürerek ezin.



Küveti(küvetleri) kapatın.

KS4.3 T / 20



Название метода

Номер метода

Штрих-код для распознавания метода

Диапазон измерений

$K_{S_{4.3}}$ T M20
0.1 - 4 mmol/l $K_{S_{4.3}}$ S:4.3
Кислота / индикатор

Химический метод

Отображение на дисплее в MD 100 MD 110 / MD 200

Специфическая информация об инструменте

Тест может быть выполнен на следующих устройствах. Кроме того, указывается требуемая кювета и диапазон поглощения фотометра.

Приборы	Кювета	λ	Диапазон измерений
MD 200, MD 600, MD 610, MD 640, MultiDirect, PM 620, PM 630	\varnothing 24 mm	610 nm	0.1 - 4 mmol/l $K_{S_{4.3}}$
SpectroDirect, XD 7000, XD 7500	\varnothing 24 mm	615 nm	0.1 - 4 mmol/l $K_{S_{4.3}}$

Материал

Необходимый материал (частично необязательный):

Заголовок	Упаковочная единица	Номер заказа
Alka-M-Photometer	Таблетка / 100	513210BT
Alka-M-Photometer	Таблетка / 250	513211BT

Область применения

- Обработка сточных вод
- Подготовка питьевой воды
- Обработка сырой воды

Примечания

1. Термины Щелочность M, m-значение, общая калийность и кислотная сила $K_{S_{4.3}}$ идентичны.
2. Точное соблюдение объема пробы в 10 мл имеет решающее значение для точности результатов анализа.

Сокращенное обозначение языка в соответствии с ISO 639-1

Статус редакции

RU Методическое руководство 01/20

**Выполнение
измерения**
Выполнение определения Кислотная сила $K_{s4.3}$ с таблеткой

Выберите метод в устройстве.

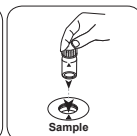
Для этого метода измерения нуля не требуется для следующих устройств: XD 7000, XD 7500



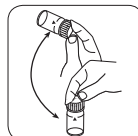
24-Наполните ковеву -мм
10 пробой мл.



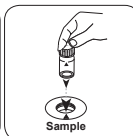
Закройте ковеву(ы).



Поместите ковеву для проб в измерительную шахту. Обращайте внимание на позиционирование.



Растворите таблетку (таблетки) покачиванием.




Поместите ковеву для проб в измерительную шахту. Обращайте внимание на позиционирование.



Нажмите клавишу TEST (XD: СТАРТ).

На дисплее отображается результат в виде Кислотная сила $K_{s4.3}$.

KS4.3 T / 20


方法名称

方法号

用于方法检测的条形码

测量范围

$K_{S4.3} T$
0.1 - 4 mmol/l $K_{S4.3}$

酸性 / 指示剂

20

屏幕显示: MD 100 / MD 110 / MD 200

化学方法

儀器的具體信息

測試可以在以下設備上執行。此外還指出了所需的比色杯和光度計的吸收範圍。

儀器類型	比色皿	λ	測量範圍
MD 200, MD 600, MD 610, MD 640, MultiDirect, PM 620, PM 630	\varnothing 24 mm	610 nm	0.1 - 4 mmol/l $K_{S4.3}$
SpectroDirect, XD 7000, XD 7500	\varnothing 24 mm	615 nm	0.1 - 4 mmol/l $K_{S4.3}$

材料

所需材料 (部分可選) :

標題	包裝單位	貨號
Alka-M-Photometer	片劑 / 100	513210BT
Alka-M-Photometer	片劑 / 250	513211BT

應用列表

- 污水處理
- 飲用水處理
- 原水處理

備註

1. 術語總度-m、m-值、總碱度和酸容量 $K_{S4.3}$ 是相同的。
2. 準確地遵守 10 ml 的樣本體積對分析結果的準確度至關重要。

語言代碼 ISO 639-1

修訂狀態

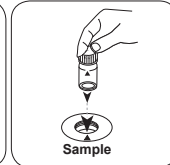
CN 方法手冊 01/20

开始测量

进行测定 $K_{s4.3}$ 片剂酸容量

选择设备中的方法。

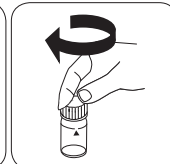
对于这种方法，在以下设备上不能进行 ZERO 测量：XD 7000, XD 7500

用 10 ml 样本填充 24 mm 比密封比色杯。
色杯。将样本比色杯放入测量轴
中。注意定位。

• • •

加入 ALKA-M-PHOTOME-
TER 片剂。

用轻微的扭转压碎片剂。



密封比色杯。

CN 方法手册 01/20

ZH

Tintometer GmbH

Lovibond® Water Testing
Schleefstraße 8-12
44287 Dortmund
Tel.: +49 (0)231/94510-0
sales@lovibond.com
www.lovibond.com
Germany

Tintometer South East Asia

Unit B-3-12, BBT One Boulevard,
Lebuhr Nilam 2, Bandar Bukit Tinggi,
Klang, 41200, Selangor D.E
Tel.: +60 (0)3 3325 2285/6
Fax: +60 (0)3 3325 2287
lovibond.asia@tintometer.com
www.lovibond.com
Malaysia

Tintometer India Pvt. Ltd.

Door No: 7-2-C-14, 2nd, 3rd & 4th Floor
Sanathnagar Industrial Estate,
Hyderabad, 500018
Telangana
Tel: +91 (0) 40 23883300
Toll Free: 1 800 599 3891/ 3892
indiaoffice@lovibond.in
www.lovibondwater.in
India

The Tintometer Limited

Lovibond House
Sun Rise Way
Amesbury, SP4 7GR
Tel.: +44 (0)1980 664800
Fax: +44 (0)1980 625412
sales@lovibond.uk
www.lovibond.com
UK

Tintometer Brazil

Caixa Postal: 271
CEP: 13201-970
Jundiaí – SP
Tel.: +55 (11) 3230-6410
sales@lovibond.us
www.lovibond.com.br
Brazil

Tintometer Spain

Postbox: 24047
08080 Barcelona
Tel.: +34 661 606 770
sales@tintometer.es
www.lovibond.com
Spain

Tintometer China

9F, SOHO II C.
No.9 Guanghualu,
Chaoyang District,
Beijing, 100020
Customer Care China Tel.: 4009021628
Tel.: +86 10 85251111 Ext. 330
Fax: +86 10 85251001
chinaoffice@tintometer.com
www.lovibond.com
China

Tintometer Inc.

6456 Parkland Drive
Sarasota, FL 34243
Tel: 941.756.6410
Fax: 941.727.9654
sales@lovibond.us
www.lovibond.us
USA



Technical changes without notice
Printed in Germany 10/24

No.: 00386767

Lovibond® and Tintometer® are Trademarks of
the Tintometer Group of Companies

