

Lovibond® Water Testing

Tintometer® Group



Manual of Methods

MD50 • MD150

EN MD50 Photometer

Page 4

ES Fotómetro MD50

Página 8

PT Fotómetro MD50

Página 12

NL MD50 Fotometer

Zijde 16

RU Фотометр MD50

Страница 20

DE MD50 Photometer

Seite 6

FR MD50 Photomètre

Page 10

IT Fotometro MD50

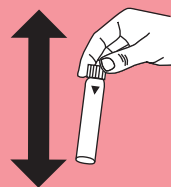
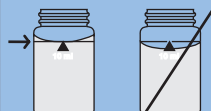
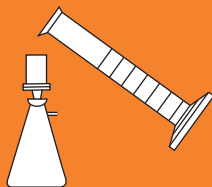
Pagina 14

TR MD50 fotometre

Sayfa 18

ZH MD50 光度计

Page 22



KS4.3 T / 20


Method name

Method number

Bar code for the detection of the methods

Measuring range

20

S:4.3

$K_{S4.3 T}$
 0.1 - 4 mmol/l $K_{S4.3}$
 Acid / Indicator

Chemical Method

Instrument specific information

The test can be performed on the following devices. In addition, the required cuvette and the absorption range of the photometer are indicated.

Instrument Type	Cuvette	λ	Measuring Range
MD 200, MD 600, MD 610, MD 640, MultiDirect, PM 620, PM 630	ø 24 mm	610 nm	0.1 - 4 mmol/l $K_{S4.3}$
SpectroDirect, XD 7000, XD 7500	ø 24 mm	615 nm	0.1 - 4 mmol/l $K_{S4.3}$

Material

Required material (partly optional):

Reagents	Packaging Unit	Part Number
Alka-M-Photometer	Tablet / 100	513210BT
Alka-M-Photometer	Tablet / 250	513211BT

Application List

- Waste Water Treatment
- Drinking Water Treatment
- Raw Water Treatment

Notes

1. The terms Alkalinity-m, m-Value, total alkalinity and Acid demand to $K_{S4.3}$ are identical.
2. For accurate results, exactly 10 ml of water sample must be used for the test.

Language codes
ISO 639-1

Revision status

EN Handbook of Methods 01/20

Performing test procedure

Implementation of the provision Acid capacity $K_{S_{4.3}}$ with Tablet

Select the method on the device

For this method, no ZERO measurements are to be carried out with the following devices: XD 7000, XD 7500



Fill 24 mm vial with **10 ml sample**.



Close vial(s).



Place **sample vial** in the sample chamber. • Pay attention to the positioning.

• • •



Dissolve tablet(s) by inverting.



Place **sample vial** in the sample chamber. • Pay attention to the positioning.



Press the **TEST (XD: START)** button.

The result in Acid Capacity $K_{S_{4.3}}$ appears on the display.

KS4.3 T / 20


Methoden Name

Methodennummer

Barcode zur Methodenerkennung

Messbereich

$K_{S_{4.3} T}$
 0,1 - 4 mmol/l $K_{S_{4.3}}$
 Säure / Indikator

20

S:4.3

Displayanzeige im MD 100 MD 110 / MD 200

Chemische Methode

Instrumentenspezifische Informationen

Der Test kann auf den folgenden Geräten durchgeführt werden. Zusätzlich sind die benötigte Küvette und der Absorptionsbereich der Photometer angegeben.

Geräte	Küvette	λ	Messbereich
MD 200, MD 600, MD 610, MD 640, MultiDirect, PM 620, PM 630	ø 24 mm	610 nm	0,1 - 4 mmol/l $K_{S_{4.3}}$
SpectroDirect, XD 7000, XD 7500	ø 24 mm	615 nm	0,1 - 4 mmol/l $K_{S_{4.3}}$

Material

Benötigtes Material (zum Teil optional):

Reagenzien	Form/Menge	Bestell-Nr.
Alka-M-Photometer	Tablette / 100	513210BT
Alka-M-Photometer	Tablette / 250	513211BT

Anwendungsbereich

- Abwasserbehandlung
- Trinkwasseraufbereitung
- Rohwasserbehandlung

Anmerkungen

1. Die Begriffe Alkalität-m, m-Wert, Gesamtalkalität und Säurekapazität $K_{S_{4.3}}$ sind identisch.
2. Die exakte Einhaltung des Probevolumens von 10 ml ist für die Genauigkeit des Analyseergebnisses entscheidend.

Sprachkürzel nach ISO 639-1

Revisionsstand

DE Methodenhandbuch 01/20

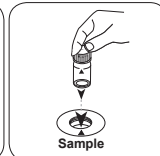
Durchführung der
Messung**Durchführung der Bestimmung Säurekapazität $K_{s4,3}$ mit Tablette**

Die Methode im Gerät auswählen.

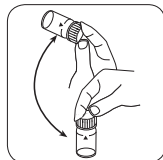
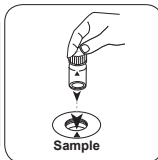
Für diese Methode muss bei folgenden Geräten keine ZERO-Messung durchgeführt werden: XD 7000, XD 7500


24-mm-Küvette mit **10 ml**
Probe füllen.

Küvette(n) verschließen.

Die **Probenküvette** in
den Messschacht stellen.
Positionierung beachten.

• • •

Tablette(n) durch Um-
schwenken lösen.Die **Probenküvette** in
den Messschacht stellen.
Positionierung beachten.Taste **TEST** (XD: **START**)
drücken.In der Anzeige erscheint das Ergebnis als Säurekapazität $K_{s4,3}$.

KS4.3 T / 20


Nombre del método

Número de método

Código de barras para reconocer el método

Rango de medición

20

S:4.3

Indicación en la pantalla de MD 100 / MD 110 / MD 200

Método químico

Información específica del instrumento

La prueba puede realizarse en los siguientes dispositivos. Además, se muestran la cubeta requerida y el rango de absorción del fotómetro.

Dispositivos	Cubeta	λ	Rango de medición
MD 200, MD 600, MD 610, MD 640, MultiDirect, PM 620, PM 630	\varnothing 24 mm	610 nm	0.1 - 4 mmol/l $K_{S4.3}$
SpectroDirect, XD 7000, XD 7500	\varnothing 24 mm	615 nm	0.1 - 4 mmol/l $K_{S4.3}$

Material

Material requerido (parcialmente opcional):

Título	Unidad de embalaje	Referencia No
Fotómetro alca-M	Tabletas / 100	513210BT
Fotómetro alca-M	Tabletas / 250	513211BT

Lista de aplicaciones

- Tratamiento de aguas residuales
- Tratamiento de aguas potables
- Tratamiento de aguas de aporte

Notas

1. Las definiciones de alcalinidad-m, valor-m y capacidad ácida $K_{S4.3}$ son idénticas.
2. Añadir un volumen de muestra de exactamente 10 ml, ya que este volumen influye de forma decisiva en la exactitud del resultado.

Códigos de idioma ISO 639-1

Estado de revisión

ES Manual de Métodos 01/20

Realización de la determinación

Ejecución de la determinación Capacidad ácida $K_{a4.3}$ con tableta

Seleccionar el método en el aparato.

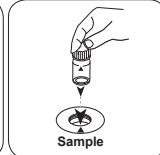
Para este método no es necesario realizar medición CERO en los aparatos siguientes: XD 7000, XD 7500



Llenar la cubeta de 24 mm con 10 ml de muestra .



Cerrar la(s) cubeta(s).



Poner la **cubeta de muestra** en el compartimiento de medición. ¡Debe tenerse en cuenta el posicionamiento!

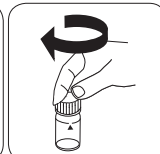
• • •



Añadir **tableta ALKA-M-PHOTOMETER**.




Triturar la(s) tableta(s) girando ligeramente.



Cerrar la(s) cubeta(s).

KS4.3 T / 20



Nom de la méthode → KS4.3 T

Numéro de méthode → 20

Code à barres pour reconnaître la méthode → [Barcode]

Plage de mesure → 0.1 - 4 mmol/l $K_{S4.3}$

Méthode chimique → Acide / Indicateur

Affichage dans le MD 100 / MD 110 / MD 200 → S:4.3

Informations spécifiques à l'instrument

Le test peut être effectué sur les appareils suivants. De plus, la cuvette requise et la plage d'absorption du photomètre sont indiquées.

Appareils	Cuvette	λ	Gamme de mesure
MD 200, MD 600, MD 610, MD 640, MultiDirect, PM 620, PM 630	ø 24 mm	610 nm	0.1 - 4 mmol/l $K_{S4.3}$
SpectroDirect, XD 7000, XD 7500	ø 24 mm	615 nm	0.1 - 4 mmol/l $K_{S4.3}$

Matériel

Matériel requis (partiellement optionnel):

Titre	Pack contenant	Code
Alka-M-Photometer	Pastilles / 100	513210BT
Alka-M-Photometer	Pastilles / 250	513211BT

Liste d'applications

- Traitement des eaux usées
- Traitement de l'eau potable
- Traitement de l'eau brute

Indication

1. Les termes Alcalinité-m, Valeur m, Alcalinité totale et Capacité acide $K_{S4.3}$ sont identiques.
2. L'observation exacte du volume d'échantillon de 10 ml est décisive pour l'exactitude du résultat de l'analyse.

Codes de langue ISO 639-1 → FR

État de révision → 01/20

FR Méthodes Manuel 01/20

Procédure du test

Réalisation de la quantification Capacité acide $K_{s4.3}$ avec pastille

Sélectionnez la méthode sur l'appareil.

Cette méthode ne nécessite aucune mesure du zéro sur les appareils suivants : XD 7000, XD 7500

Remplissez une cuvette de 24 mm de **10 ml d'échantillon**.

Fermez la(les) cuvette(s).

Placez la **cuvette réservée à l'échantillon** dans la chambre de mesure. Attention à la positionner correctement.

• • •


Ajoutez une **pastille de ALKA-M-PHOTOMETER**.

Écrasez la(les) pastille(s) en la(les) tournant un peu.



Fermez la(les) cuvette(s).

KS4.3 T / 20



Nome do método

Número do método

Código de barras para a detecção dos métodos

Área de medição

$K_{S_{4.3}} T$
0.1 - 4 mmol/l $K_{S_{4.3}}$
Ácido / Indicador

20
S:4.3

Indicado no display: MD 100 / MD 110 / MD 200

Método Químico

Informação específica do instrumento

O teste pode ser realizado nos seguintes dispositivos. Além disso, a cubeta necessária e a faixa de absorção do fotómetro são indicadas.

Dispositivos	Cubeta	λ	Faixa de Medição
MD 200, MD 600, MD 610, MD 640, MultiDirect, PM 620, PM 630	ø 24 mm	610 nm	0.1 - 4 mmol/l $K_{S_{4.3}}$
SpectroDirect, XD 7000, XD 7500	ø 24 mm	615 nm	0.1 - 4 mmol/l $K_{S_{4.3}}$

Material

Material necessário (parcialmente opcional):

Título	Unidade de Embalagem	Artigo No
Alka-M-Photometer	Pastilhas / 100	513210BT
Alka-M-Photometer	Pastilhas / 250	513211BT

Lista de Aplicações

- Tratamento de Esgotos
- Tratamento de Água Potável
- Tratamento de Água Bruta

Notas

1. Os termos alcalinidade-m, m-valor, alcalinidade total e capacidade de acidez $K_{S_{4.3}}$ são idênticos.
2. O cumprimento exato do volume da amostra de 10 ml é decisivo para a precisão do resultado de análise.

Códigos de idioma ISO 639-1

Nível de revisão

PT Métodos Manual 01/20

Efetuar a medição

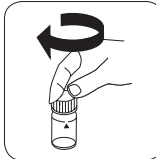
Realização da determinação Capacidade de acidez $K_{s4.3}$ com pastilha

Escolher o método no equipamento.

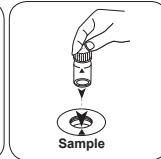
Para este método não tem de ser efetuada uma medição ZERO nos seguintes equipamentos: XD 7000, XD 7500



Encher a célula de 24 mm com 10 ml de amostra .

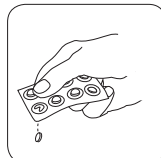


Fechar a(s) célula(s).

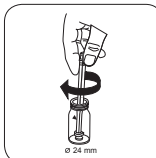


Colocar a **célula de amostra** no compartimento de medição. Observar o posicionamento.

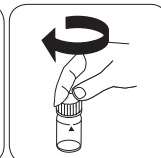
• • •



Pastilha ALKA-M-PHOTO-METER.



Esmagar a(s) pastilha(s) rodando ligeiramente.




Fechar a(s) célula(s).

PT Métodos Manual 01/20

PT

KS4.3 T / 20



Denominazione metodo

Numero metodo

Codice a barre per riconoscere il metodo

Range di misura

$K_{S_{4.3} T}$
0.1 - 4 mmol/l $K_{S_{4.3}}$

Acido/indicatore

20
S:4.3

Indicazione sul display del MD 100 / MD 110 / MD 200

Metodo chimico

Informazioni specifiche dello strumento

Il test può essere eseguito sui seguenti dispositivi. Inoltre, sono indicate la cuvetta richiesta e il range di assorbimento del fotometro.

Dispositivi	Cuvetta	λ	Campo di misura
MD 200, MD 600, MD 610, MD 640, MultiDirect, PM 620, PM 630	ø 24 mm	610 nm	0.1 - 4 mmol/l $K_{S_{4.3}}$
SpectroDirect, XD 7000, XD 7500	ø 24 mm	615 nm	0.1 - 4 mmol/l $K_{S_{4.3}}$

Materiale

Materiale richiesto (in parte facoltativo):

Titolo	Unità di imballaggio	N. ordine
Alka-M-Photometer	Pastiglia / 100	513210BT
Alka-M-Photometer	Pastiglia / 250	513211BT

Campo di applicazione

- Trattamento acqua di scarico
- Trattamento acqua potabile
- Trattamento acqua non depurata

Note

1. I termini alcalinità M, valore M, alcalinità totale e capacità acida $K_{S_{4.3}}$ sono equivalenti.
2. Per l'accuratezza del risultato dell'analisi è fondamentale che il volume del campione misuri esattamente 10 ml.

ISO 639-1 codici linguistici

Stato di revisione

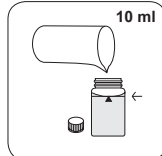
IT Manuale dei Metodi 01/20

Svolgimento della misurazione

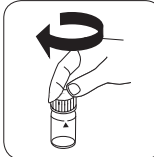
Esecuzione della rilevazione Capacità acida $K_{s4,3}$ con pastiglia

Selezionare il metodo nel dispositivo.

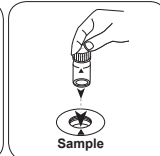
Con i seguenti dispositivi, per questo metodo non è necessario eseguire una misurazione ZERO: XD 7000, XD 7500



Riempire una cuvetta da 24 mm con **10 ml di campione**.

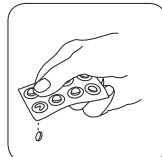


Chiudere la/e cuvetta/e.

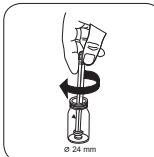


Posizionare la **cuvetta del campione** nel vano di misurazione. Fare attenzione al posizionamento.

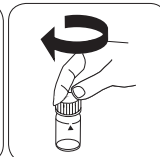
• • •



Aggiungere una **pastiglia ALKA-M-PHOTOMETER**.




Frantumare la/e pastiglia/e con una leggera rotazione.



Chiudere la/e cuvetta/e.

KS4.3 T / 20



Naam van de methode

Nummer methode

Streepjescode ter identificatie van de methode

Meetbereik

$K_{S_{4.3}} T$ M20
0.1 - 4 mmol/l $K_{S_{4.3}}$ S:4.3
Zuur / Indicator

Chemische methode

Uitlezing in MD
100 MD 110 / MD 200

Instrument specifieke informatie

De test kan op de volgende apparaten worden uitgevoerd. Bovendien worden de vereiste cuvette en het absorptiebereik van de fotometer aangegeven.

Toestellen	Cuvet	λ	Meetbereik
MD 200, MD 600, MD 610, MD 640, MultiDirect, PM 620, PM 630	\varnothing 24 mm	610 nm	0.1 - 4 mmol/l $K_{S_{4.3}}$
SpectroDirect, XD 7000, XD 7500	\varnothing 24 mm	615 nm	0.1 - 4 mmol/l $K_{S_{4.3}}$

Reagentia

Benodigd materiaal (deels optioneel):

Titel	Verpakkingseenheid	Bestelnr.
Alka-M-Photometer	Tablet / 100	513210BT
Alka-M-Photometer	Tablet / 250	513211BT

Toepassingsbereik

- Afvalwaterzuivering
- Behandeling drinkwater
- Zuivering vervuild water

Aantekeningen

1. De termen alkaliteit-m, m-waarde, totale alkaliteit en zuurcapaciteit_{S_{4.3}} zijn identiek.
2. De exacte naleving van het monstervolume van 10 ml is bepalend voor de nauwkeurigheid van het analysesresultaat.

Beknopte naam conform de norm ISO 639-1

Herziene versie

NL Handboek van Methoden 01/20

Uitvoering van de meting

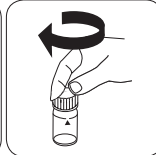
Uitvoering van de bepaling Zuurcapaciteit $K_{s4,3}$ met tablet

De methode in het apparaat selecteren.

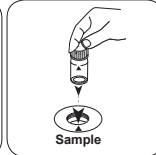
Voor deze methode moet bij de volgende apparaten geen nulmeting worden uitgevoerd:
XD 7000, XD 7500



Spoelbakje van 24 mm met **10 ml staal** vullen.

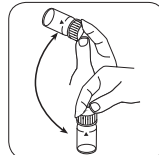


De spoelbakjes afsluiten.

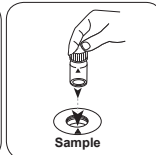


Het **staal spoelbakje** in de meetschacht plaatsen. Op de positionering letten.

• • •



Tabletten oplossen door om te draaien



Het **staal spoelbakje** in de meetschacht plaatsen. Op de positionering letten.



De toets **TEST** (XD: **START**) indrukken.

De display toont het resultaat als Zuurcapaciteit $K_{s4,3}$.

KS4.3 T / 20

Yöntem Adı

Yöntemleri numarası

Yöntemi tanımak için barkod

Ölçüm aralığı

Kimyasal Metod

$K_{S4.3} T$
0.1 - 4 mmol/l $K_{S4.3}$
Asit / Gösterge

20
S:4.3

Ekrandaki: MD 100 MD 110 / MD 200

Enstrümana özel bilgi

Test, aşağıdaki cihazlarda gerçekleştirilebilir. Ek olarak, gerekli küvet ve fotometrenin emilim aralığı belirtilmiştir.

Cihazlar	Küvet	λ	Ölçüm Aralığı
MD 200, MD 600, MD 610, MD 640, MultiDirect, PM 620, PM 630	ø 24 mm	610 nm	0.1 - 4 mmol/l $K_{S4.3}$
SpectroDirect, XD 7000, XD 7500	ø 24 mm	615 nm	0.1 - 4 mmol/l $K_{S4.3}$

Malzeme

Gerekli materyal (kısmen isteğe bağlı):

Başlık	Paketleme Birimi	Ürün No
Alka-M-Photometer	Tablet / 100	513210BT
Alka-M-Photometer	Tablet / 250	513211BT

Uygulama Listesi

- Atık Su Arıtma
- İçme Suyu Arıtma
- Ham Su Arıtma

Notlar

1. Alkalite-m, m değeri, toplam alkalite ve asit kapasitesi $K_{S4.3}$ kavramları ayrıdır.
2. 10 ml'lik numune hacmine tam riayet edilmesi, analiz sonucunun doğruluğu bakımından önemlidir.

Dil kodları ISO 639-1

Revizyon durumu

TR Metotlar Kılavuzu 01/20

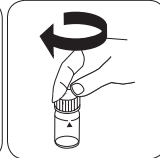
Testin uygulanması
Tespitin uygulanması Tabletli asit kapasitesi $K_{S4,3}$

Cihazda metot seçin.

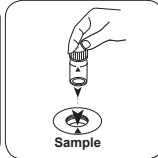
Bu metot için şu cihazlarda ZERO ölçümü yapılması gerekmez: XD 7000, XD 7500



24 mm'lik küveti **10 ml numune** ile doldurun.

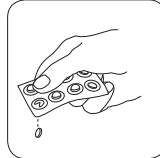


Küveti(küvetleri) kapatın.

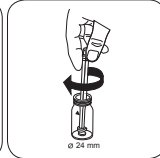


Numune küvetini ölçüm haznesine koyun. Doğru konumlandırılmasına dikkat edin.

• • •



ALKA-M-PHOTOMETER tablet ilave edin.




Tableti(tabletleri) hafifçe döndürerek ezin.



Küveti(küvetleri) kapatın.

KS4.3 T / 20



Название метода

Номер метода

Штрих-код для распознавания метода

Диапазон измерений

$K_{S_{4.3}}$ T M20
0.1 - 4 mmol/l $K_{S_{4.3}}$ S:4.3

Химический метод

Кислота / индикатор

Отображение на дисплее в MD 100 MD 110 / MD 200

Специфическая информация об инструменте

Тест может быть выполнен на следующих устройствах. Кроме того, указывается требуемая кювета и диапазон поглощения фотометра.

Приборы	Кювета	λ	Диапазон измерений
MD 200, MD 600, MD 610, MD 640, MultiDirect, PM 620, PM 630	\varnothing 24 mm	610 nm	0.1 - 4 mmol/l $K_{S_{4.3}}$
SpectroDirect, XD 7000, XD 7500	\varnothing 24 mm	615 nm	0.1 - 4 mmol/l $K_{S_{4.3}}$

Материал

Необходимый материал (частично необязательный):

Заголовок	Упаковочная единица	Номер заказа
Alka-M-Photometer	Таблетка / 100	513210BT
Alka-M-Photometer	Таблетка / 250	513211BT

Область применения

- Обработка сточных вод
- Подготовка питьевой воды
- Обработка сырой воды

Примечания

1. Термины Щелочность M, m-значение, общая калийность и кислотная сила $K_{S_{4.3}}$ идентичны.
2. Точное соблюдение объема пробы в 10 мл имеет решающее значение для точности результатов анализа.

Сокращенное обозначение языка в соответствии с ISO 639-1

Статус редакции

RU Методическое руководство 01/20

**Выполнение
измерения**
Выполнение определения Кислотная сила $K_{s4.3}$ с таблеткой

Выберите метод в устройстве.

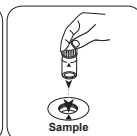
Для этого метода измерения нуля не требуется для следующих устройств: XD 7000, XD 7500



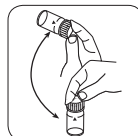
24-Наполните ковеву -мм
10 пробой мл.



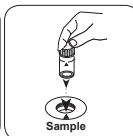
Закройте ковеву(ы).



Поместите ковеву для
проб в измерительную
шахту. Обращайте
внимание на
позиционирование.



Растворите таблетку
(таблетки) покачиванием.




Поместите ковеву для
проб в измерительную
шахту. Обращайте
внимание на
позиционирование.



Нажмите клавишу TEST
(XD: СТАРТ).

На дисплее отображается результат в виде Кислотная сила $K_{s4.3}$.

KS4.3 T / 20


方法名称

方法号

用于方法检测的条形码

测量范围

$K_{S_{4.3}} T$
 0.1 - 4 mmol/l $K_{S_{4.3}}$
 酸性 / 指示剂

20

S:4.3

屏幕显示: MD 100 / MD 110 / MD 200

化学方法

儀器的具體信息

測試可以在以下設備上執行。此外還指出了所需的比色杯和光度計的吸收範圍。

儀器類型	比色皿	λ	測量範圍
MD 200, MD 600, MD 610, MD 640, MultiDirect, PM 620, PM 630	\varnothing 24 mm	610 nm	0.1 - 4 mmol/l $K_{S_{4.3}}$
SpectroDirect, XD 7000, XD 7500	\varnothing 24 mm	615 nm	0.1 - 4 mmol/l $K_{S_{4.3}}$

材料

所需材料 (部分可選) :

標題	包裝單位	貨號
Alka-M-Photometer	片劑 / 100	513210BT
Alka-M-Photometer	片劑 / 250	513211BT

應用列表

- 污水處理
- 飲用水處理
- 原水處理

備註

1. 術語總度-m、m-值、總碱度和酸容量 $K_{S_{4.3}}$ 是相同的。
2. 準確地遵守 10 ml 的樣本體積對分析結果的準確度至關重要。

語言代碼ISO 639-1

修訂狀態

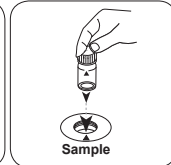
CN 方法手冊 01/20

开始测量

进行测定 $K_{s4.3}$ 片剂酸容量

选择设备中的方法。

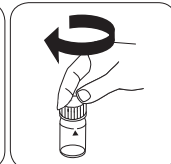
对于这种方法，在以下设备上不能进行 ZERO 测量：XD 7000, XD 7500

用 10 ml 样本填充 24 mm 比密封比色杯。
色杯。将样本比色杯放入测量轴
中。注意定位。

• • •

加入 ALKA-M-PHOTOME-
TER 片剂。

用轻微的扭转压碎片剂。



密封比色杯。

CN 方法手册 01/20

ZH

Tintometer GmbH

Lovibond® Water Testing
Schleefstraße 8-12
44287 Dortmund
Tel.: +49 (0)231/94510-0
sales@lovibond.com
www.lovibond.com
Germany

Tintometer South East Asia

Unit B-3-12, BBT One Boulevard,
Lebuhr Nilam 2, Bandar Bukit Tinggi,
Klang, 41200, Selangor D.E
Tel.: +60 (0)3 3325 2285/6
Fax: +60 (0)3 3325 2287
lovibond.asia@tintometer.com
www.lovibond.com
Malaysia

Tintometer India Pvt. Ltd.

Door No: 7-2-C-14, 2nd, 3rd & 4th Floor
Sanathnagar Industrial Estate,
Hyderabad, 500018
Telangana
Tel: +91 (0) 40 23883300
Toll Free: 1 800 599 3891/ 3892
indiaoffice@lovibond.in
www.lovibondwater.in
India

The Tintometer Limited

Lovibond House
Sun Rise Way
Amesbury, SP4 7GR
Tel.: +44 (0)1980 664800
Fax: +44 (0)1980 625412
sales@lovibond.uk
www.lovibond.com
UK

Tintometer Brazil

Caixa Postal: 271
CEP: 13201-970
Jundiaí – SP
Tel.: +55 (11) 3230-6410
sales@lovibond.us
www.lovibond.com.br
Brazil

Tintometer Spain

Postbox: 24047
08080 Barcelona
Tel.: +34 661 606 770
sales@tintometer.es
www.lovibond.com
Spain

Tintometer China

9F, SOHO II C.
No.9 Guanghualu,
Chaoyang District,
Beijing, 100020
Customer Care China Tel.: 4009021628
Tel.: +86 10 85251111 Ext. 330
Fax: +86 10 85251001
chinaoffice@tintometer.com
www.lovibond.com
China

Tintometer Inc.

6456 Parkland Drive
Sarasota, FL 34243
Tel: 941.756.6410
Fax: 941.727.9654
sales@lovibond.us
www.lovibond.us
USA



Technical changes without notice
Printed in Germany 10/24

No.: 00386768

Lovibond® and Tintometer® are Trademarks of
the Tintometer Group of Companies

